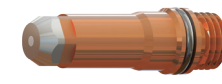
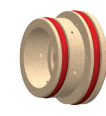
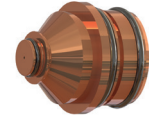
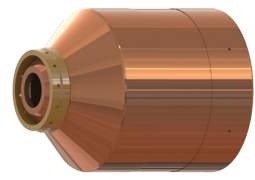
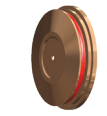
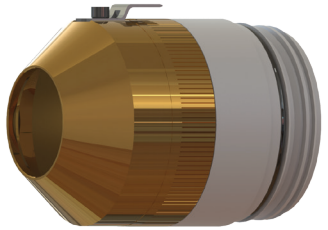


80A MILD STEEL - O₂ PLASMA / AIR SHIELD

Plasma gas inlet:
120psi/8.4bar
Shield gas inlet:
120PSI/8.4bar



Shield Cap
60-0173

Shield
60-0189

Nozzle Retaining Cap
60-0176

Nozzle
60-0188

Swirl Ring
60-0179

Electrode
60-0566

Water Tube
60-0340

ENGLISH

Thickness	Prewlow		Cutflow		Arc Voltage	Torch-to-Work	Cutting Speed	Initial Pierce Height	Pierce Delay
	Inches	O2 Plasma	Air Shield	O2 Plasma	Air Shield	AV	Inches	Inches/Minute	In
0.075	48	23	78	23	112	0.10	400	0.15	0.1
0.105					115		290		
0.135					117		180		
3/16					120	0.08	155	0.16	0.2
1/4					123		110		
5/16					125		96		
3/8				127	75				
1/2				130	10	50	0.20	0.7	
5/8				133		37		0.8	
3/4				135		25		0.25	0.9

† American Torch Tip Company is in no way affiliated with the above-named manufacturer(s). References to the above-named machines, torches and numbers are for your convenience only. American Torch Tip is not necessarily authorized by the above-named manufacturer(s) to provide replacement parts. Most parts advertised for sale are made by, or for, American Torch Tip Company and other parts, as indicated, are original parts manufactured by the above-named OEM and are simply being resold by American Torch Tip Company. Part numbers followed by an * are manufactured by the respective OEM.

METRIC

Thickness	Prewflow		Cutflow		Arc Voltage	Torch-to-Work	Cutting Speed	Initial Pierce Height	Pierce Delay
mm	O2 Plasma	Air Shield	O2 Plasma	Air Shield	AV	mm	mm/Minute	mm	Sec
2	48	23	78	23	112	2.5	9810	3.8	0.1
2.5					115		7980		
3					117		6145		
4					120	2	4300	4.0	0.2
5					121		3670		
6					123		3045		
8					125		2430		
10				127	1810				
12				130	1410				
15				133	1030				
20				135	2.5	545	6.3	0.9	

† American Torch Tip Company is in no way affiliated with the above-named manufacturer(s). References to the above-named machines, torches and numbers are for your convenience only. American Torch Tip is not necessarily authorized by the above-named manufacturer(s) to provide replacement parts. Most parts advertised for sale are made by, or for, American Torch Tip Company and other parts, as indicated, are original parts manufactured by the above-named OEM and are simply being resold by American Torch Tip Company. Part numbers followed by an * are manufactured by the respective OEM.