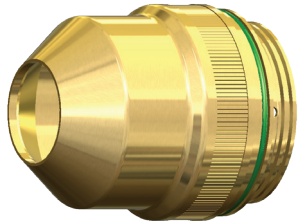
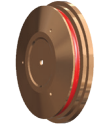


## 30A MILD STEEL - O<sub>2</sub> PLASMA / AIR SHIELD

Plasma gas inlet:  
120psi/8.4bar  
Shield gas inlet:  
120PSI/8.4bar



**Shield Cap**  
90-0747



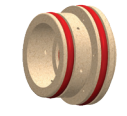
**Shield**  
60-0194



**Nozzle Retaining Cap**  
90-0754



**Nozzle**  
60-0193



**Swirl Ring**  
90-0180



**Electrode**  
60-0192



**Water Tube**  
90-0340

ENGLISH

Thickness	Prewlow		Cutflow		Arc Voltage	Torch-to-Work	Cutting Speed	Initial Pierce Height		Pierce Delay		
	Inches	O2 Plasma	O2 Shield	O2 Plasma	O2 Shield	AV	Inches	Inches/Minute	In	Factor	Sec	
0.018	78	17	94	17	114	0.05	215	0.09	180	0.1		
0.024					115		200					
0.030					116		170					
0.036					117		155					
0.048					119		110					
0.060		35	7	7	120	1.06	60				0.11	0.4
0.075					122		50					
0.105					123		40					
0.135*					128		30					
3/16*							25					
1/4*	75								0.5			
									0.7			
									1.0			

† American Torch Tip Company is in no way affiliated with the above-named manufacturer(s). References to the above-named machines, torches and numbers are for your convenience only. American Torch Tip is not necessarily authorized by the above-named manufacturer(s) to provide replacement parts. Most parts advertised for sale are made by, or for, American Torch Tip Company and other parts, as indicated, are original parts manufactured by the above-named OEM and are simply being resold by American Torch Tip Company. Part numbers followed by an \* are manufactured by the respective OEM.

**METRIC**

Thickness	Prewflow		Cutflow		Arc Voltage	Torch-to-Work	Cutting Speed	Initial Pierce Height		Pierce Delay
mm	O2 Plasma	O2Shield	O2 Plasma	O2 Shield	AV	mm	mm/Minute	mm	Factor	Sec
0.5	78	17	94	17	114	1.3	5355	0.09	180	0.1
0.8					4225		0.2			
1					116		0.3			
1.2					117					
1.5					119					
2		35		7	120	1.5	1490	2.7		0.4
2.5					122		1325			
3*		75		123	1160		0.5			
4*				125	905		0.7			
6*				128	665		1.0			

† American Torch Tip Company is in no way affiliated with the above-named manufacturer(s). References to the above-named machines, torches and numbers are for your convenience only. American Torch Tip is not necessarily authorized by the above-named manufacturer(s) to provide replacement parts. Most parts advertised for sale are made by, or for, American Torch Tip Company and other parts, as indicated, are original parts manufactured by the above-named OEM and are simply being resold by American Torch Tip Company. Part numbers followed by an \* are manufactured by the respective OEM.